

FROCA



Boston



HARVARD 1



BOSTON 1



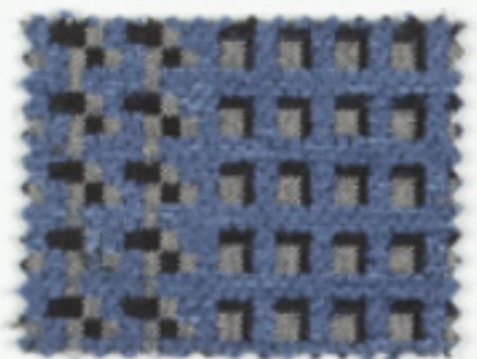
HARVARD 2



ESTEPA 24



BOSTON 2



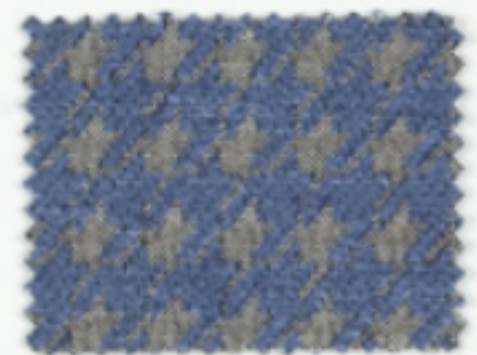
HARVARD 11



ESTEPA 13



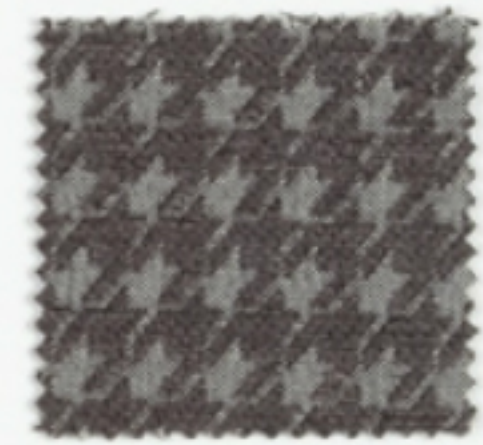
ESTEPA 25



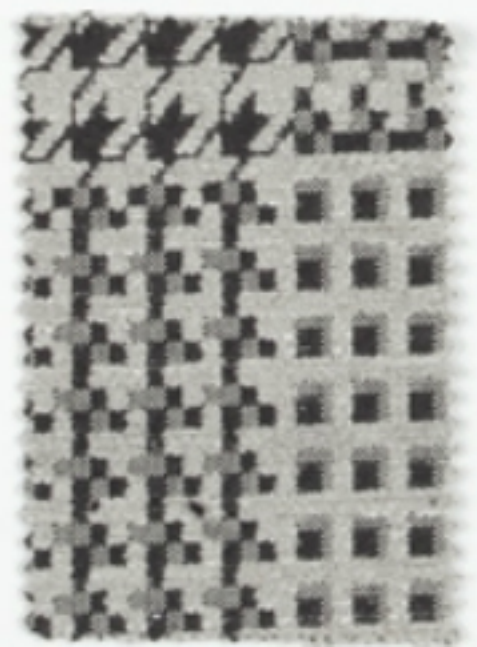
BOSTON 11



ESTEPA 18

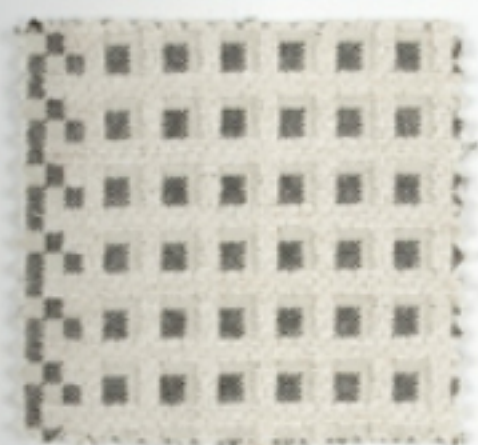


BOSTON 13



ESTEPA 22





HARVARD 3



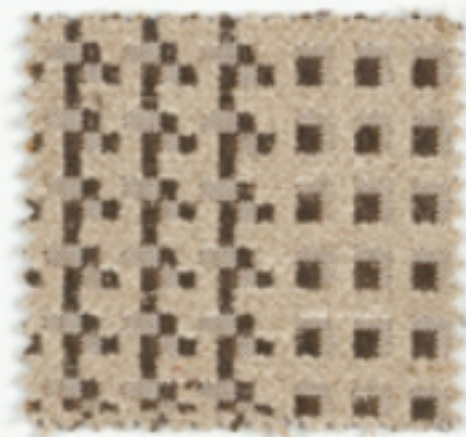
ESTEPA 30



BOSTON 3



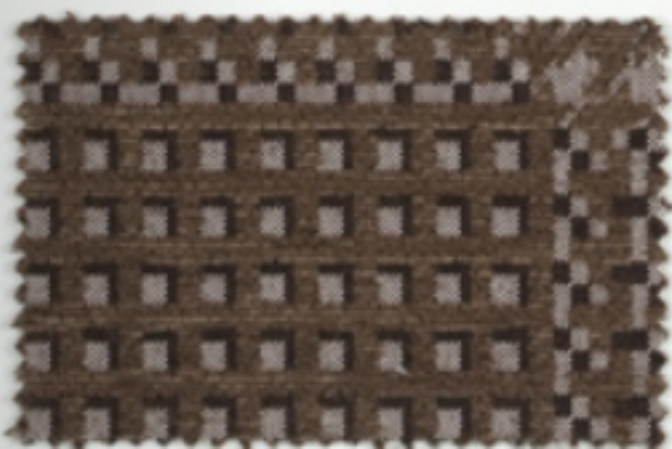
BOSTON 5



HARVARD 4



BOSTON 4

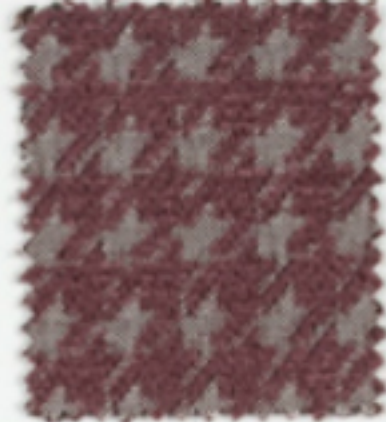


ESTEPA 26

FROCA



HARVARD 9



BOSTON 9



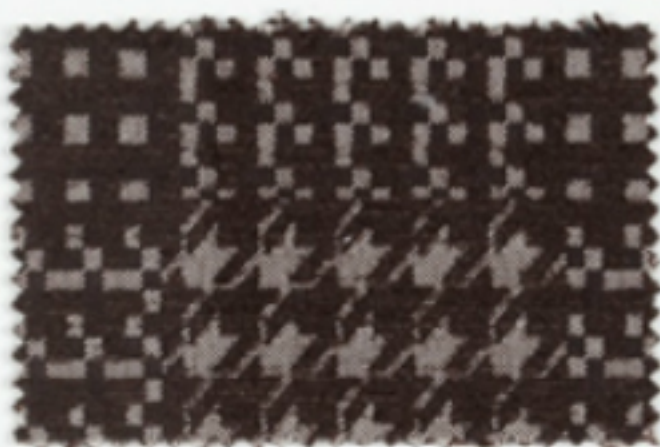
HARVARD 10



ESTEPA 29



BOSTON 10



HARVARD 8



ESTEPA 27



HARVARD 7



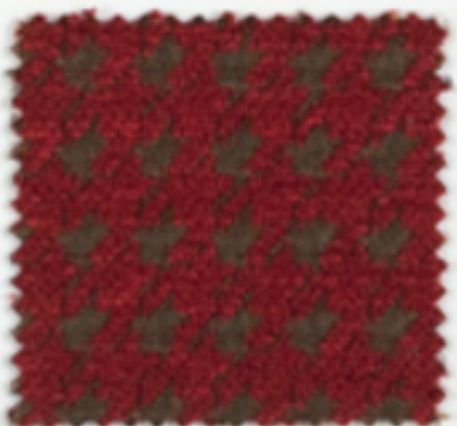
BOSTON 8



BOSTON 7



ESTEPA 9



BOSTON 8

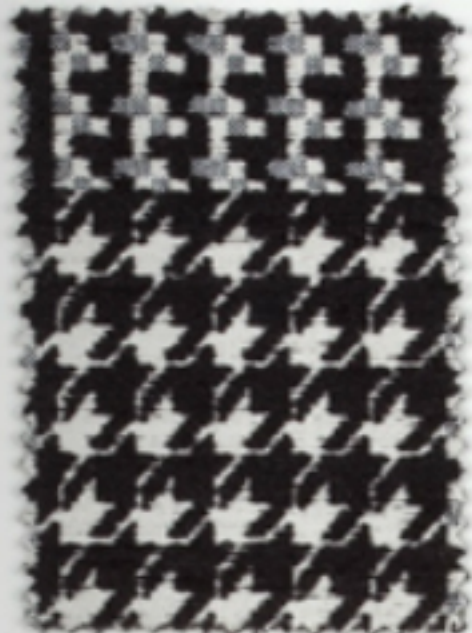


HARVARD 8

dralon



MACHINE WASHABLE



HARVARD 15



BOSTON 15



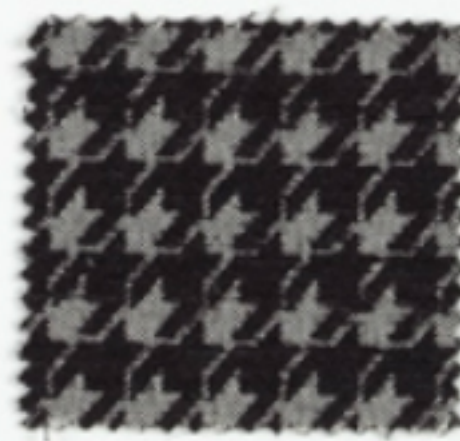
HARVARD 14



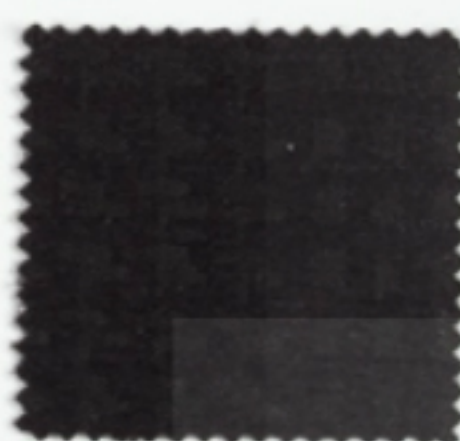
ESTEPA 18



BOSTON 16



BOSTON 14



HARVARD 16

ESPECIFICACIONES TÉCNICAS / TECHNICAL SPECIFICATIONS / SPÉCIFICATIONS TECHNIQUES

Composición / Composition / Composition: 40% PNL - 40% PES
 Ancho / Width / Largeur: 140 cm / 54 in.
 Peso / Weight / Poids: ESTEPA: 300 gr/m² HAWAII: 400 gr/m² BOSTON: 400 gr/m²

Resistencia de las costuras / Seam strength / Resistance des coutures:
 Unidades / Piece / Châles: ESTEPA: 1,80 mm HAWAII: 2,30 mm BOSTON: 2,30 mm
 Terna / Web / Tane: ESTEPA: 2,30 mm HAWAII: 2,30 mm BOSTON: 2,30 mm

Resistencia a la abrasión / Abrasion resistance / Resistance à l'abrasion:
 Ciclos / Cycle / Cycle: ESTEPA: +10.000 HAWAII: +25.000 BOSTON: +10.000

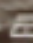


Solidez de las costuras a la luz / Colour fastness to light / Resistance à la lumière: 5 UNE 43001 UNE 43002

Solidez a la fricción en seco / Rubbing abrasion / Resistance au frottement: 5 ISO 105-D01 UNE 43000

Solidez de las costuras al lavado / Rubbing fastness in household / Resistance au lavage: 5 ISO 105-C06 UNE 43000

Resistencia al pilling / Pilling resistance / Résistance à la peluche: 4-5 ISO 105-A02

INSTRUCCIONES DE LAVADO / WASHING INSTRUCTIONS / INSTRUCTIONS DE LAVAGE

 Toda lavandería con agua fría o tibia.  Temperatura máxima permitida: 30°C.  No usar lejía.  No usar ciclo de centrifugado.  No usar velocidad de centrifugado superior a 1000 rpm.  Toda limpieza a seco con solvente.

FROCA

www.froca.com