

FROCA



Florencia



MONZA 4



ESTEPA 4



ESTEPA 5



BIOLIA 4

dralon®



MACHINE
WASHABLE



FLORENZA 4



LIVORNO 5



LIVORNO 10



FROCA



FLORENZA 1



MONZA 1



LIVORNO 20



dralon
a day ahead in carpet design



**MACHINE
WASHABLE**



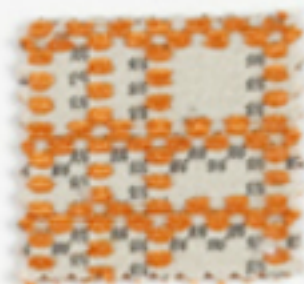
FLORENZA 5



SOZIA 5



ESTEPA 7



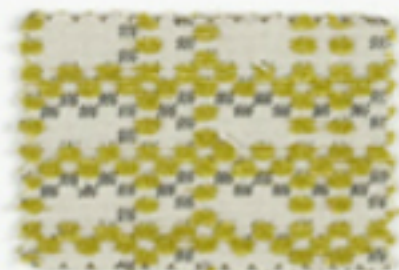
MONZA 5



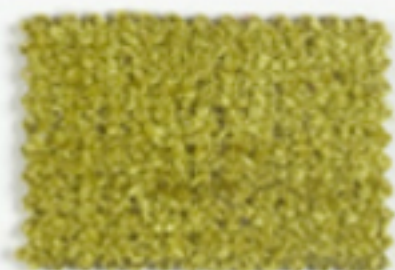
LIVORNO 21



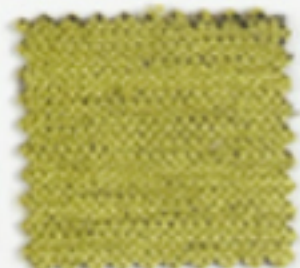
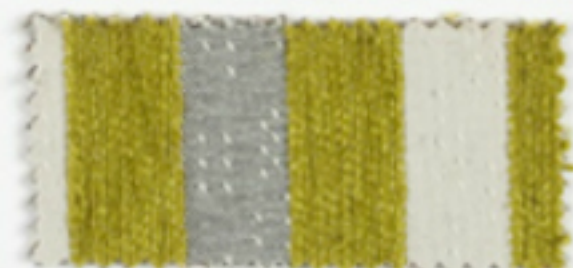
LIVORNO 22



MONZA 6

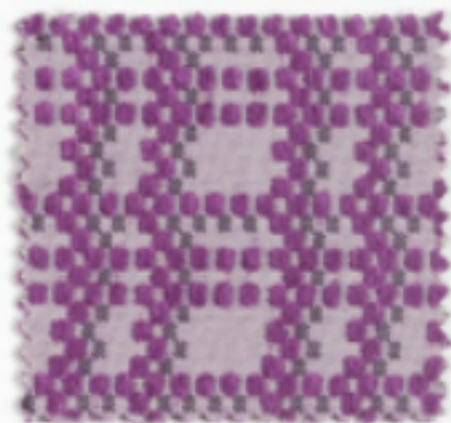


LIVORNO 23





SOLIA 7



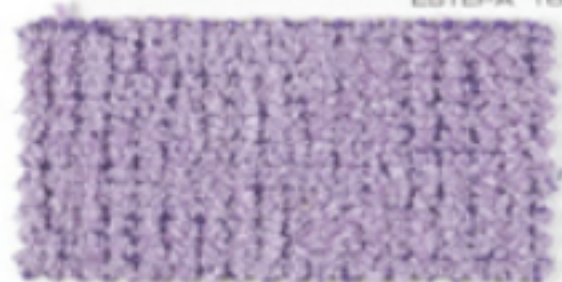
MONZA 7



ESTEPA 23



ESTEPA 18



LIVORNO 26



FLORENZA 7

FROCA

dralon®

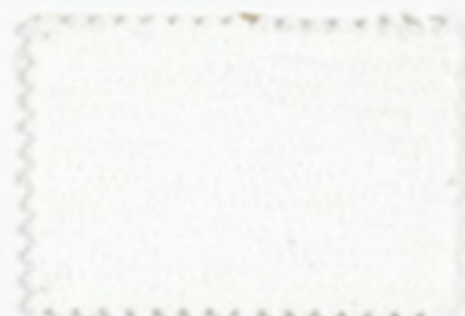


MACHINE WASHABLE



SOIA 8

FROCA



ESTEPA 24



MONZA 8



FLORENZA 8



LIVORNO 28



FLORENZA 2



ESTEPA 20



ESTEPA 21



MONZA 2



ESTEPA 27



SICILIA 17

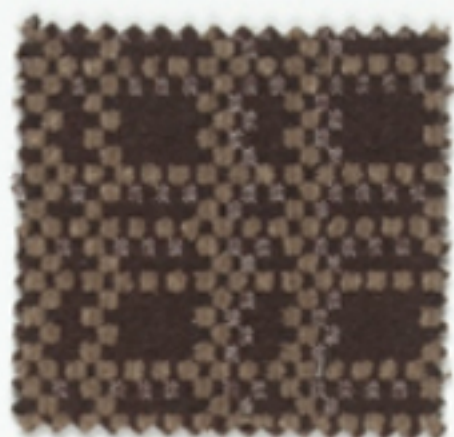
dralon®



MACHINE
WASHABLE



SOLIA 13



MONZA 13



LIVORNO 20



LIVORNO 32



FLORENZA 13






SICLIA 3



ESTEPA 6



MONZA 3

 dralon®
L'ESCLUSIVITÀ È SUOI STILI



MACHINE
WASHABLE



ESTEPA 4

FROCA





LIVORNO 24



LIVORNO 5

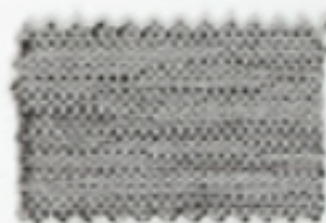


FLORENZIA 3





BOLIA 12



ESTEPA 22



ESTEPA 10



MONZA 12



FLORENZA 12



LIVORNO 27



LIVORNO 13

dralon®



MACHINE
WASHABLE



SICLIA 11



ESTEPA 25



MONZA 11



LIVORNO 21



FLORENZA 11





LIVORNO 35



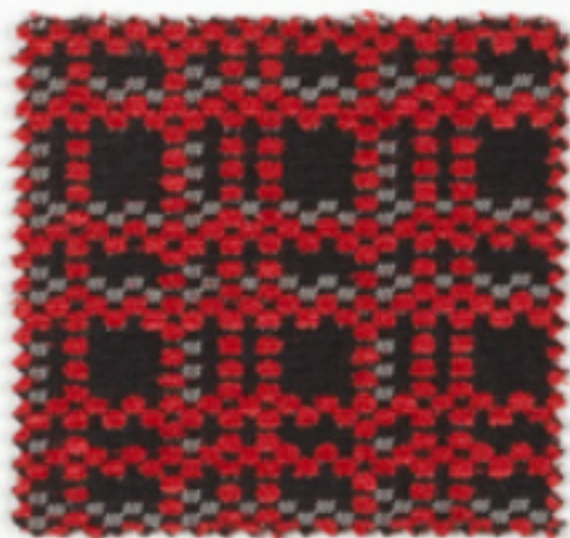
ESTE 10



SICLIA 10



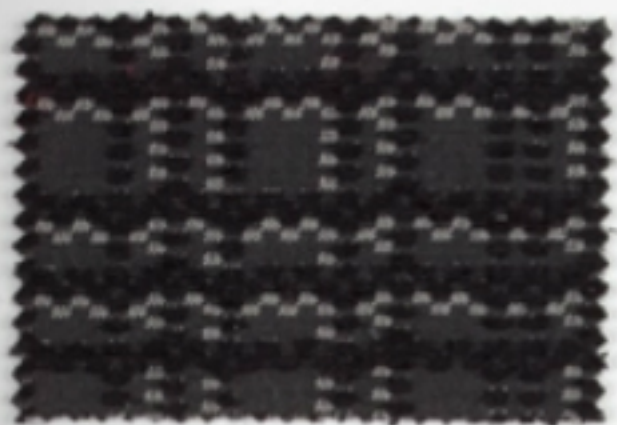
ESTER 10



MONZA 10



FLORENZA 10



MONZA 9



FLORENZIA 9



ESTEPA 18



ESTEPA 19



LIVORNO 13


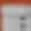


ESPECIFICACIONES TÉCNICAS / TECHNICAL SPECIFICATIONS / SPÉCIFICATIONS TECHNIQUES

Composición / Composition / Composition: ESTEPA - FLORENCIA - MONZA - SICILIA: 60% PAC - 40% PES... LIVORNO: 70% PAC - 30% PES

Axilla / Axilla / Largeur: 140 cm / 54 in

Peso / Weight / Poids: ESTEPA: 300 g/m² FLORENCIA - MONZA - SICILIA: 400 g/m² LIVORNO: 500 g/m²

Sentido de la tela / Direction / Direction: MONZA - FLORENCIA:  SICILIA: 

Resistencia de las costuras / Seam strength / Résistance des coutures:

Urbano / Urban / Citain: ESTEPA: 1,80 mm FLORENCIA - MONZA - SICILIA: 2,00 mm 85 3000 1000

LIVORNO: 1,00 mm

Tiempo / Wet / Temps: ESTEPA: 2,0 mm FLORENCIA - MONZA - SICILIA: 2,00 mm 85 2543 1000

LIVORNO: 2,10 mm

Resistencia a la abrasión / Abrasion resistance / Résistance à l'abrasion:

Ciclo / Cycle / Cycle: ESTEPA: >32.000 FLORENCIA - MONZA - SICILIA: >25.000 85 5000 85 2543 1000

LIVORNO: >40.000

Solidez de los colores a la luz / Colour fastness to light / Résistance à la lumière

5 UNE 40187 85 1006 800

Solidez a la limpieza en seco / Rubbing solvents / Résistance au nettoyage à sec

5 SO 105-001 UNE 40000

Solidez de los colores al lavado / Rubbing fastness in humid state / Résistance au nettoyage

5 SO 105-006 UNE 40000

Resistencia al pilling / Pilling resistance / Résistance au pilling

4-5 SO-06 12945-2

INSTRUCCIONES DE LAVADO / WASHING INSTRUCTIONS / INSTRUCTIONS DE LAVAGE



Puede lavarse a máquina, centrifugar y secarse en tumbador.
Machine washable and tumble-dryable. Do not use the centrifuge.
Lave à la machine et centrifugez à l'aise. Ne pas utiliser le tambour.



Resillar por la cara posterior, max. 110°.
Iron only on the rear side, at a maximum of 110°.
Resaler par la face de derrière, 110° au maximum.



No use dry clean.
Do not use bleach.
Ne pas utiliser eau de Javel.



Enter color in wet.
Avoid drying in the sun.
Enter color in wet.



Puede utilizar el lavado en seco.
Dry cleaning can also be used.
Nettoyer à sec peut être utilisé.

FROCA

www.froca.com